



*Quality Products. Service Excellence.*

## Type 1 Mild Steel Splitter Trough *CST Series*

Hinged Door with Screw

### Application

- The splitter troughs are designed for distribution of up to 600 A (max) service using either 3 or 4 wires.



### Standards

- CSA Certified
- Complies with
  - IEC 60529, IP20

### Construction

- Formed and spot welded from 14 or 16 gauge steel.
- Factory installed splitter blocks.
- Series of knockouts on each side.
- Padlocking hasp.

### Finish

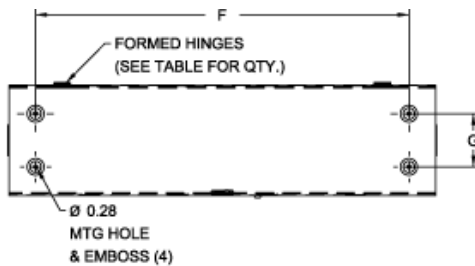
- Cover and enclosure are finished in recoatable smooth ANSI 61 gray powder coating.

### Accessories

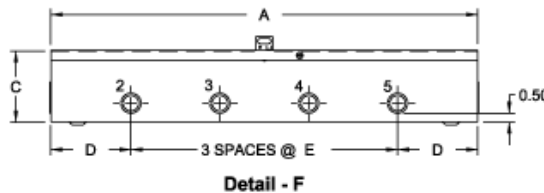
- Splitter Blocks
- Grounding Kits



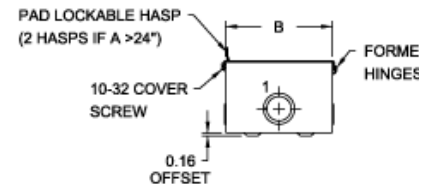
Type 1 Mild Steel Splitter Trough (CST Series) - Hammond Mfg.



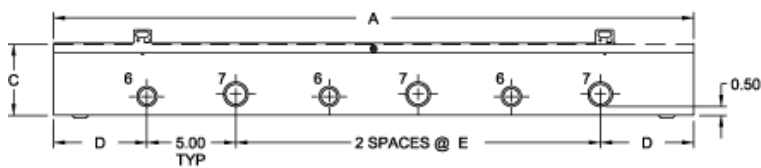
**Top View**



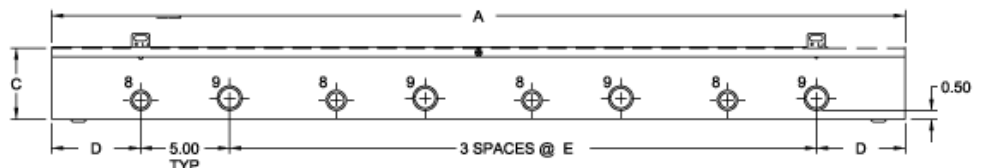
**Detail - F**



**End View**



**Detail - G**



**Detail - H**

| Part Number |          |             | CU/AL   | Dimensions |       |      |
|-------------|----------|-------------|---------|------------|-------|------|
| 3 Wire      | 4 Wire   | Less Blocks | Amps    | H          | W     | D    |
| CST273      | CST274   | -           | 70/70   | 24.00      | 6.00  | 4.00 |
| CST373      | CST374   | -           | 70/70   | 36.00      | 6.00  | 4.00 |
| CST473      | CST474   | -           | 70/70   | 48.00      | 6.00  | 4.00 |
| CST2103     | CST2104  | CST2100     | 125/120 | 24.00      | 6.00  | 4.00 |
| CST3103     | CST3104  | CST3100     | 125/120 | 36.00      | 6.00  | 4.00 |
| CST4103     | CST4104  | CST4100     | 125/120 | 48.00      | 6.00  | 4.00 |
| CST6103*    | CST6104* | CST6100*    | 125/120 | 72.00      | 8.00  | 5.00 |
| CST2203*    | -        | CST2200*    | 225/225 | 24.00      | 8.00  | 5.00 |
| CST3203*    | CST3204* | CST3200*    | 225/225 | 36.00      | 8.00  | 5.00 |
| CST4203*    | CST4204* | CST4200*    | 225/225 | 48.00      | 8.00  | 5.00 |
| CST5203*    | CST5204* | CST5200*    | 225/225 | 60.00      | 8.00  | 5.00 |
| CST6203*    | CST6204* | -           | 225/225 | 72.00      | 8.00  | 5.00 |
| CST3403*    | -        | CST3400*    | 400/340 | 36.00      | 10.00 | 6.00 |
| CST4403*    | CST4404* | CST4400*    | 400/340 | 48.00      | 10.00 | 6.00 |
| CST5403*    | CST5404* | CST5400*    | 400/340 | 60.00      | 10.00 | 6.00 |
| CST6403*    | CST6404* | CST6400*    | 400/340 | 72.00      | 10.00 | 6.00 |
| CST4603*    | CST4604* | -           | 600/574 | 48.00      | 10.00 | 6.00 |
| CST5603*    | CST5604* | -           | 600/574 | 60.00      | 10.00 | 6.00 |
| CST6603*    | CST6604* | -           | 600/574 | 72.00      | 10.00 | 6.00 |

\* 14 gauge steel

Data subject to change without notice

