



Quality Products. Service Excellence.

Type 1 Mild Steel Splitter Trough *CST Series*

Hinged Door with Screw

Application

- The splitter troughs are designed for distribution of up to 600 A (max) service using either 3 or 4 wires.



Standards

- CSA Certified
- Complies with
 - IEC 60529, IP20

Construction

- Formed and spot welded from 14 or 16 gauge steel.
- Factory installed splitter blocks.
- Series of knockouts on each side.
- Padlocking hasp.

Finish

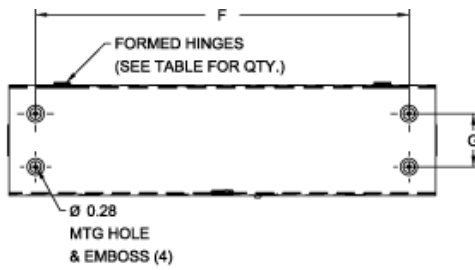
- Cover and enclosure are finished in recoatable smooth ANSI 61 gray powder coating.

Accessories

- Splitter Blocks
- Grounding Kits

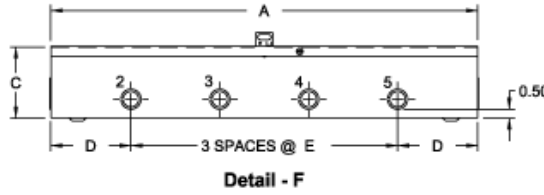


Type 1 Mild Steel Splitter Trough (CST Series) - Hammond Mfg.

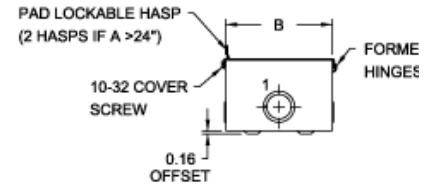


Top View

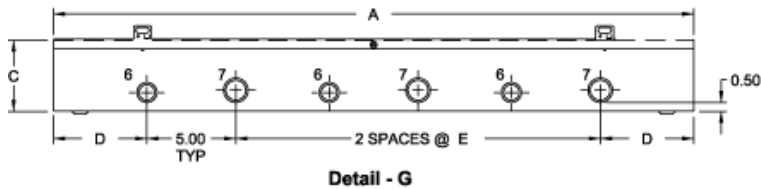
NOTE: KNOCKOUTS TYPICAL ON OPPOSITE SIDES



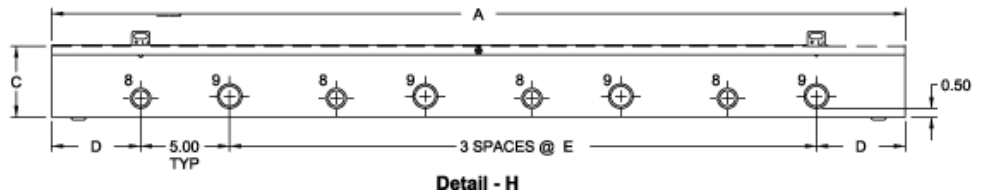
Detail - F



End View



Detail - G



Detail - H

Part Number			CU/AL	Dimensions		
3 Wire	4 Wire	Less Blocks	Amps	H	W	D
CST273	CST274	-	70/70	24.00	6.00	4.00
CST373	CST374	-	70/70	36.00	6.00	4.00
CST473	CST474	-	70/70	48.00	6.00	4.00
CST2103	CST2104	CST2100	125/120	24.00	6.00	4.00
CST3103	CST3104	CST3100	125/120	36.00	6.00	4.00
CST4103	CST4104	CST4100	125/120	48.00	6.00	4.00
CST6103*	CST6104*	CST6100*	125/120	72.00	8.00	5.00
CST2203*	-	CST2200*	225/225	24.00	8.00	5.00
CST3203*	CST3204*	CST3200*	225/225	36.00	8.00	5.00
CST4203*	CST4204*	CST4200*	225/225	48.00	8.00	5.00
CST5203*	CST5204*	CST5200*	225/225	60.00	8.00	5.00
CST6203*	CST6204*	-	225/225	72.00	8.00	5.00
CST3403*	-	CST3400*	400/340	36.00	10.00	6.00
CST4403*	CST4404*	CST4400*	400/340	48.00	10.00	6.00
CST5403*	CST5404*	CST5400*	400/340	60.00	10.00	6.00
CST6403*	CST6404*	CST6400*	400/340	72.00	10.00	6.00
CST4603*	CST4604*	-	600/574	48.00	10.00	6.00
CST5603*	CST5604*	-	600/574	60.00	10.00	6.00
CST6603*	CST6604*	-	600/574	72.00	10.00	6.00

* 14 gauge steel

Data subject to change without notice

