

20AYO1 Product Details



20AYO1

TE Internal Number: 6609066-4



EMI/RFI Filters and Accessories

 Always EU RoHS/ELV Compliant (Statement of Compliance)

Product Highlights:

- Filter - EMI/RFI
- Filter Type = Power Line
- AYO (3-20 Amp) Series
- 3 Phase WYE Application
- Mount Style = Flanged

Documentation & Additional Information

Product Drawings:

- [CUSTOMER DRAWING 20AYO1](#) (PDF, English)

Catalog Pages/Data Sheets:

- [1-1654250-1_CORCOM_EMI_RFI_QRG](#) (PDF, English)
- [1654001_Corcom_Product_Guide_AYO_Series](#) (PDF, English)

Product Specifications:

- None Available

Application Specifications:

- None Available

Instruction Sheets:

- None Available

CAD Files: (CAD Format & Compression Information)

- [2D Drawing](#) (DXF, Version A)
- [3D Model](#) (IGES, Version A)
- [3D Model](#) (STEP, Version A)

Additional Information:

- [Product Line Information](#)

Additional Product Images:

- [Insertion Loss/Specifications](#)

Related Products:

- [Tooling](#)

Product Features (Please use the Product Drawing for all design activity)

Product Type Features:

- [Product Type](#) = Filter - EMI/RFI
- [Filter Type](#) = Power Line
- [Series](#) = AYO (3-20 Amp)
- [Filtered](#) = Yes

Electrical Characteristics:

- [Current Rating \(A\)](#) = 20
- [Voltage ≤ \(VAC\)](#) = 440
- [Leakage Current \(Line-to-Ground\) Max. @ 250 VAC 50 Hz \(mA\)](#) = 5.5
- [Leakage Current \(Line-to-Ground\) Max. @ 120 VAC 60 Hz \(mA\)](#) = 3.5

Termination Features:

- [Terminal Input - Output Combination](#) = 1/4" Faston - 1/4" Faston

Body Features:

- [Mount Style](#) = Flanged

Industry Standards:

- [RoHS/ELV Compliance](#) = RoHS compliant, ELV compliant
- [Lead Free Solder Processes](#) = Not relevant for lead free process
- [RoHS/ELV Compliance History](#) = Always was RoHS compliant
- [Approved Standards](#) = UL Recognized, CSA Certified, VDE Approved

Conditions for Usage:

- [Facility Installation](#) = No
- [Need Min Size With IEC Connector](#) = No
- [Need Optional Switch, Fusing, Or Voltage Selector](#) = No

Operation/Application:

- [Application](#) = 3 Phase WYE

Other:

- [Brand](#) = Corcom

20AY01

SAFETY ORGANIZATION(S):

THIS FILTER HAS BEEN FORMALLY RECOGNIZED, CERTIFIED OR APPROVED BY THE LISTED AGENCY. THEREFORE, ALL TEST/REQUIREMENTS SPECIFIED IN THE LATEST REVISION OF THE FOLLOWING AGENCY STANDARDS HAVE BEEN MET.

UL RECOGNIZED
CSA CERTIFIED
VDE APPROVED

UL 1283
CSA 22.2, NO.0, 0.4, 8
VDE 565-3

OPERATING SPECIFICATIONS:

LINE VOLTAGE/CURRENT: 20 AMP, 120/250 VAC
20 AMP./40°C, 250 VAC
LINE FREQUENCY: 50-60Hz

MAX. LEAKAGE CURRENT, EACH:
LINE TO GROUND, 2.0 mA AT 120V 60Hz
3.0 mA at 250V 50Hz

OPERATING AMBIENT TEMP. RANGE: -10°C TO +40°C @ RATED CURRENT, I_r

IN AN AMBIENT, T_a, HIGHER THAN 40°C, THE MAXIMUM OPERATING CURRENT, I_o, IS AS FOLLOWS:

$$I_o = I_r \sqrt{\frac{85 - T_a}{45}}$$

RELIABILITY SPECIFICATIONS:

STORAGE TEMPERATURE: -40°C TO +85°C
HUMIDITY: 21 DAYS @ 40°C 95% RH
CURRENT OVERLOAD TEST: 6 TIMES RATED CURRENT FOR 8 SECONDS

TEST SPECIFICATIONS:

INDUCTANCE: .12 mH NOMINAL
CAPACITANCE (MEASURED @ 1 KHz, 0.25VAC MAX., 25°C±1°C)
LINE TO GROUND: 47000pF ±20%
LINE TO LINE: .10 μF ±20%
DISCHARGE RESISTOR: 1500KΩ

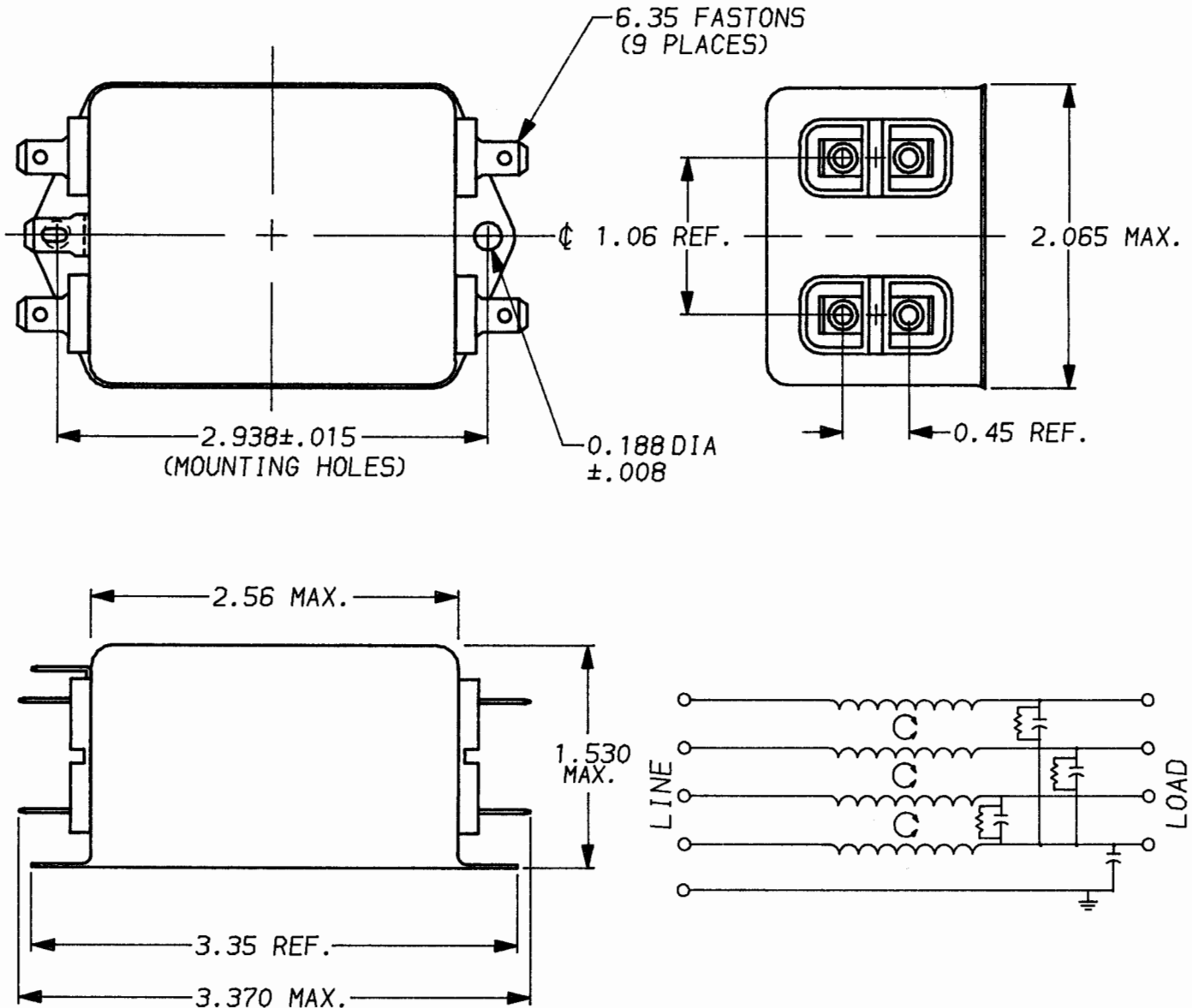
LINE/GROUND AND LINE/LINE: 6000MΩ (MIN) AT 100VDC
INSULATION RESISTANCE: 20°C AND 50% RH

RECOMMENDED RECEIVING INSPECTION HIPOT:

LINES TO GROUND: 1500 VAC FOR 1 MINUTE
LINE TO LINE: 1450 VDC FOR 1 MINUTE

FILTER APPROVAL:

THE BEST WAY TO SELECT AND QUALIFY A FILTER IS FOR YOUR ENGINEERING TO TEST THE UNIT IN YOUR EQUIPMENT.



50n - 50n (MINIMUM) INSERTION LOSS

FREQUENCY MHz	.15	.5	1.0	5.0	10	30						
COMMON dB	-	7	11	32	23	12						
DIFF. dB	10	18	24	42	38	23						

UNLESS OTHERWISE SPECIFIED,
TOLERANCE TO BE ±.025
MATERIAL & FINISH: AS SUPPLIED
This document is proprietary to CORCOM INC.
and is not to be reproduced nor used for
manufacturing purposes except on CORCOM'S
prior written consent.

corcom
LIBERTYVILLE, IL 60048

POWER LINE FILTER

DATE: 4-14-94 CATALOG NO.
APPROV: *[Signature]* 20AY01
CAD NO. 20AY01.00